

POINT n SHOOT

THE MONTHLY NEWSLETTER OF THE ASPLEY CAMERA CLUB



Note from the Editor

Can you believe it is April already! So much is happening in our Club at the moment and the big event is the PSQ convention which is next month. There have been a number of our members diligently working behind the scenes to organise

speakers, venues, and workshops. If you haven't booked, registrations are closing this coming Saturday. To register, please click this link: <https://psq-convention.com.au/registration/>

There have been a number of community pages in Facebook showing some wonderful photography and messages from people who are looking at other ways/groups etc to advance their photography skills. If you notice these groups, please take every opportunity to promote our club. Even though we are strong and have plenty of members, it's always wonderful to help others learn and see some of their work as well.

Please keep an eye on the club calendar for any upcoming events. If you can come along, please register. Club events are open to club members only, but anyone can visit one of our regular club evenings.

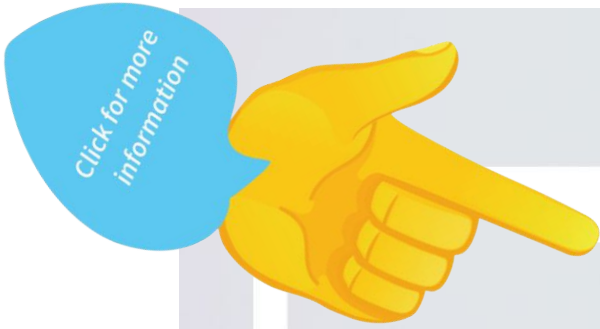
This month's judging evening is on Friday evening at 6:30pm at the Sandgate Town Hall. It might be an ideal time to arrive early and photograph some of Sandgate's beautiful architecture.

Marilyn Davies

WELCOME
new members

LAURA MCDADE
PAUL JACKSON





Upcoming Events

April

3

Committee Meeting

Wed

7:15pm

4

Samford Valley Coffee Morning

Thurs

10am

5

Club Meeting at Sandgate Town Hall

Fri

6:30pm

6

Exhibition by Jane Howie at Pomona

Sat

11am

www.aspleycameraclub.org.au/events/

9

PSQ Convention
working group

Tues

12pm

14

Beachmere Sunrise
Shoot

Sun

5:15am

18

Club Meeting

Mon

7:15pm

18

Photowalking with
Glenys, Fortitude Valley

Thurs

6:30am

22

Personal Project Group

Mon

7:15pm

24

PSQ Convention
working group

Wed

9:30am

www.aspleycameraclub.org.au/events/



Aspley Camera Club Members Only

Our next PhotoWalk will be on Thursday, 18th April and our location is in Fortitude Valley. We'll be meeting outside McWhirters, corner of Brunswick and Wickham Sts. at 6.30am. Public transport – train or bus, would be the best way to get there, but Secure parking (paid) at McWhirter's Car Park in Warner Street is only block away if you want to drive in.

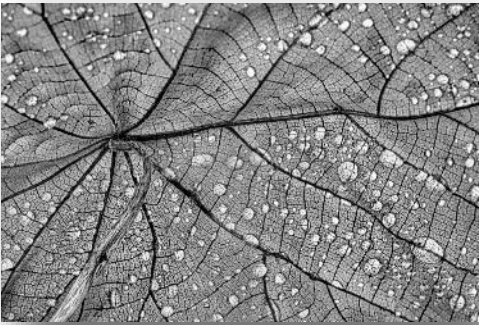
Our venue for breakfast is Reverends Fine Coffee at 372 Brunswick St. at 8am. Please RSVP on the website as soon as possible. If you're coming on the PhotoWalk but not going for breakfast, please book in on the website but also message or email me to let me know.

Fortitude Valley is a mecca for street photography as well as a variety of other subjects so come and join us for a fun morning. Here are a few shots from my recent visit.

Glenys



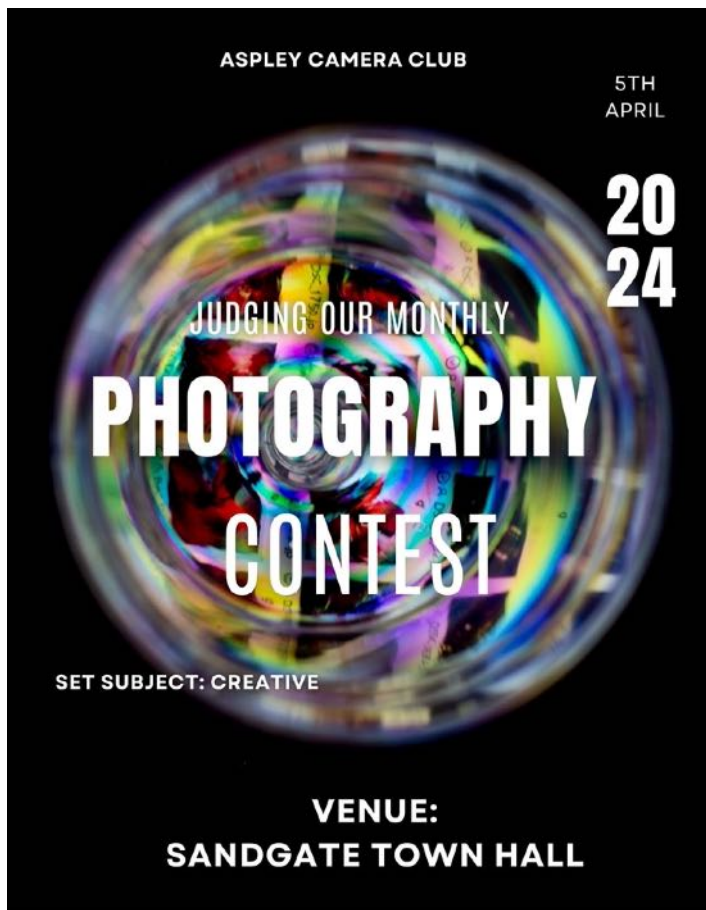
Some images from the March PhotoWalk in Aspley



Walkshops with Shane Spoor

Shane recently held a Walkshop at Kurilpa Bridge area in the city. Keep your eye on the website for more events coming up.





Mel SINCLAIR M.Photos ANZIPP PSQA (Judging the Print Competition)

Located in Ipswich, Mel loves photographing any and all aspects of the Landscape, from the literal to the abstract, and she loves winter when the ethereal, moody fog rolls into South East Queensland and gives her atmosphere and drama.

Creatively, Mel is always experimenting with how paint and mixed media can work into and alongside each other, often pushing an image beyond the print. She dabbles in other areas such as Event, Macro, Photojournalism, Travel and Theatre. She is a keen public speaker/presenter and often presents to clubs on her work in Landscape and select topics such as Monochrome, Creative Play, Local images, Art Journey, Mixed media, Data Management and Minimalism. As a Judge: Education! Improvement! Encouragement! Entering competitions is scary, but it doesn't have to be. As a judge, Mel prides herself

on giving thoughtful, quality feedback to entrants to help them improve their images. You don't grow if you don't know! So her pledge is quality feedback to all entrants where possible.

Mel is one of our keynote speakers at the PSQ Convention in May.

Barry Whisson (Judging Digital Images)

Barry thinks of himself as an "Opportunistic" Photographer, believing in the excitement of 'serendipity' as a motivator in his photography. The 'play of light' is his motivator.

He earned a Bachelor of Architecture Degree (U of Q) in 1963. By the 70s, for a family man starting his architectural practice, cost was a consideration. To record important family-times meant using rolls of 24/36-frame 35mm colour film 'stills'.

It was not until the 1980s when, in order to encourage his son into an orchid-growing hobby, Barry 'got serious' with his photography and returned to 35mm 'slides' as his recording medium.

A member of the Photographic Society Inc., hasn't looked back. He improved his work mainly through Club Comps and Shows. In 2008 Barry was elected President of the Toowoomba Photographic Society Inc. In 2013 he stepped down from a 5-year stint, but is currently a Life member. Since the '90s Barry became involved as a leader in the youth group "Space Pilots", and in 15 years ran 10 Photography Family Day-camps.

Barry was awarded a Churchill Fellowship (1990) ... a local Australia Day medal for his services to youth (1994) and was accredited as a PSQA Judge 14 years ago, (but was carrying out judging prolifically 10 years before that). Like so many of us, he too is a mentor to others. Barry continues to learn from others, to tell a story via the image, (even, yes, from the process of conducting judging throughout Queensland ... and NSW!). He hones his skills through practice! His current passion though is 'Creative Photography'.

Barry lives in Toowoomba and is married to Jill and they have 2 children and 3 grandchildren.

Becoming a Better Photographer



People/Portrait

A portrait focuses on the person and attempts to convey an image of what or who the person is, whether physically, or perhaps spiritually or emotionally.

There is also the group portrait, usually an image of a small number of people (such as a team or family portrait).

However, people can also be photographed in other ways, where the focus might not be the individuals being photographed, but the social or cultural context or their relationship to the scene in which they are placed. (Click on the photo to learn more.)

Monochrome



Monochrome photography is photography where each position on an image can record and show a different amount of light, but not a different hue. It includes all forms of black-and-white photography, which produce images containing shades of neutral grey ranging from black to white.

The link attached to this image could be worthwhile reading.

Neutral Density Filters: As we have a long exposure competition coming up, you might like to explore the use of ND Filters for your submission.

A neutral-density filter, or ND filter, is a filter that reduces or modifies the intensity of all wavelengths, or colours, of light equally. The purpose of a standard photographic neutral-density filter is to reduce the amount of light entering the lens to allow the selection of aperture, exposure time and sensor sensitivity that would otherwise



produce overexposed pictures.

Click on the link in the image to read more!

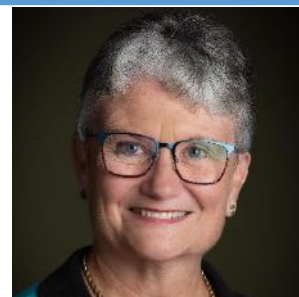
Tips for Novices



How to make your photos look better.

Do you have your profile picture on our website?

We're encouraging all members to put a profile picture on your ACC profile as this is a great way for members to put names to faces. Log onto our website and click here to go to our membership page and click on My Club Profile and upload your best selfie. This is how we can continue to remember people along with the lanyards you wear to each meeting. Here's an example of a profile pic.



Di Hodge

Cumulative scores for our competitions

Now that we are two comps into the year, we can now see the cumulative scores and how you are tracking. Once you've logged on to our website, click on the Competitions MPC link, log into our MyPhotoClub portal and click on Members on the right-hand-side in the grey box, and there you will see "Pointscore". Click on that blue icon and select the grade / set or open / print or DPI.

MONITOR YOUR SCORES

Honour = 15 Points Merit = 10 Points Acceptance = 5 Points


Members Page

VIEW ALL MY ENTRIES POINTSCORE MEMBERS DIRECTORY CRITIQUE CORNER

Published
2024 collections ready to view and comment on


View / comment on entries Scoring Collection Description

PRINT CRITIQUE 2024 (0/51)	Aspley Camera Club print critique event.
MARCH 2024 - FOOD PHOTOGRAPHY (4/172)	Monthly Competition - Food Photography Closing date - 5th Feb 2024
FEBRUARY 2024 - ARCHITECTURE (4/192)	Monthly Competition - Architecture Closing date - 15th Jan 2024



Mentoring
PHOTOGRAPHY
we can help

WHAT

-  Photoshop
-  Lightroom
-  Portrait
-  Street Photography
-  Composites
-  Macro
-  Flash Photography
-  And More




Mentoring is about Learning

Most people who join camera clubs, join to increase their skill levels, experience, and learn more. Our club has a richness of talent and experience and people who are willing to help others learn a particular skill.

Here is a list of topics and people you may wish to work with to fill advance your photography journey.

- **Absolute Basics for Beginners:** Pete Law, Di Hodge
- **Monochrome:** Rene Valks
- **Photoshop:** Rae Stanaway, Kim McHardy
- **Composite Images:** Rae Stanaway
- **Lightroom Basics:** Di Hodge
- **Still Life:** John Stein
- **Street:** Marilyn Davies, Jane Taylor
- **Macro:** Jim Psaltis, Ken Butler
- **Bird photography:** Di Hodge
- **Studio Lighting:** Troy Lum
- **Studio Photography:** Troy Lum
- **Studio portraits:** Troy Lum

- **Lightroom/Photoshop for Beginners:** Jane Howie
- **And much more:** Di Hodge
- **Audio-visual projects (AV)** Nick Clarke

If you would like to be mentored please contact a mentor directly.

If there are any other club members who wish to mentor members, please contact Pete Law or Marilyn Davies.



All submissions are due at 23:59:59 (11:59:59 pm) on the first Monday of the month for judging the following first Monday of the month. If the first Monday of the month is a public holiday, submissions are still required to be submitted by 23:59:59 on the first Monday of the month regardless if the Club meeting is on a Tuesday.

PLEASE NOTE:

ICREATIVE

Closing date: ~~Monday, 4th March~~

Judged: Friday, 5th April

Competition: Qld Interclub Competition

Definition: Creative or experimental photographs display a novel effect because of an unusual combination of objects and /or unusual viewpoint. Photographs in which the images have been modified during or after exposure by using an experimental technique are also eligible in Creative/Experimental sections. The photograph must always have a basic photographic image. Digital manipulation processes may be employed provided the original photograph was exposed by the entrant. (APS definition)

ACTION

Closing date: Monday, 1st April

Judged: Tuesday, 7th May

Competition: PCC Interclub competition

Definition: Shooting subjects in motion can be one of the most technically challenging forms of photography. Action photography requires you to carefully plan out your shoot. Beyond that, you'll need to know your camera and equipment inside and out. Of course, there's also an element of luck at play, but for many action photographers, that's part of the thrill. Action photography is about capturing subjects



in motion. It can encompass wildlife and sports photography, though you can apply the techniques involved to any number of subjects. Whatever you plan to shoot, the key to action photography is careful planning and a thorough understanding of your subject.

WINDOWS & DOORS

Closing date: Monday 6th May

Judged: Monday 3rd June

Competition: PCC Interclub competition

Definition: A photograph where the primary subject consists of Windows and/or Doors. This could be a classical photograph of the door at the entry to a building or maybe decorated for Christmas. Old doors have lots of character. Like those from abandoned or historical buildings. Doors can be open or shut providing any composition options looking through the door. Windows similarly show character and often have reflections or provide the opportunity to peek within. No people allowed.

LONG EXPOSURE

Closing date: Monday 3rd June

Judged: Monday 1st July

Competition: PCC Interclub competition

Definition: Long-exposure, time-exposure, or slow-shutter photography involves using a long-duration

shutter speed to sharply capture the stationary elements of images while blurring, smearing, or obscuring the moving elements. Long-exposure photography captures one element that conventional photography does not: an extended period of time.

SCAPES

Closing date: Monday 1st July
 Judged: Monday 5th Aug
 Competition: Qld Interclub Competition

Definition: A pictorial representation of land, sea, seashore, or urban environments that captures the aesthetic appeal of these outdoor settings. It brings the viewer into the scenery and perfectly captures the setting, mood, and feeling in the location. It can focus on wide-angle shots of landforms, rivers, estuaries, seas, seashores, city skylines, streetscapes and the like. It may also involve closer shots of features of these environments. If humans or animals are in the image, they should not be the main foci, but rather be intentionally present to give a sense of scale to the image.

MACRO

Closing date: Monday 5th August
 Judged: Monday 2nd September
 Competition: ACC Club

Definition: Macro Photography is commonly defined as close-up photography of tiny insects or objects with images that result in the subject being life-size or larger.

PEOPLE/PORTRAIT

Closing date: Monday 2nd September
 Judged: Tuesday 8th October

Competition: ACC Club

Definition: A photograph of a person or persons that may range from a head study to full body length. This section includes candid photographs and formal portraits.

MONOCHROME

Closing date: Monday 7th October
 Judged: Monday 4th November
 Competition: ACC Club

Definition: Any photograph containing shades of only one colour. If toning is carried out, it must be over the total photograph - partial toning and/or the addition of one extra colour is not acceptable in a monochrome section.

*Are you going
on holidays?*



**SUBMIT YOUR ENTRIES
EARLY THROUGH
MYPHOTOCLUB**

and use the member directory to ask
someone to submit your physical
prints.

Don't miss out! Schedule your entries



The management committee has recently approved the adoption of a new policy relating to privacy; and also wishes to advise members of an addition to the Club's rules required by law.

The Club now has a Privacy Policy. This document can be found on the Club's website at: https://www.aspleycameraclub.org.au/wp-content/uploads/2024/03/20240306_Privacy-Policy-current.pdf

The Office of Fair Trading (OFT) advised recently that changes to the law relating to incorporated associations such as ours require us to implement a grievance procedure as part of the Club's rules. The updated rules which incorporate the new grievance procedure (as set out by the OFT in its 'model rules', which the Club has previously adopted) can be found on the Club's website at the link below. The new paragraphs are numbered 12A to 12F: https://www.aspleycameraclub.org.au/wp-content/uploads/2024/03/20240207_ACC-Rules-current.pdf

If any member has any questions about these changes, please email me at admin@aspleycameraclub.org.au

Choosing the right paper

Much has been said in recent competitions about the presentation of our print entries and the paper they're printed on.

The article linked to the graphic on the right, will help you when considering your choice of paper and how the print submissions are presented.



Is there something you'd like to see in our Newsletter?

Please feel free to contact me if you have any suggestions, tips or questions you'd like to see in the newsletter. Email me on Newsletter@aspleycameraclub.org.au

Scapes by Jill Smith

Planning is everything. Get there the day before or earlier than you plan on starting your shoot.

Get your gear ready the day before, check you have your batteries charged and that you have extra cards. Do you have your tripod plate, do you have your filters, if you need them, cleaning cloths are an accessory to carry. Water, some munchies and a first aid kit including a snake bite kit are also a good thing to pack.



Walk around, get an idea of what you want to shoot, your composition, lighting and location are 3 major things you need to take into consideration when you are planning your photoshoot.

Look at different angles, if shooting in a group don't go the same way as everyone else look for something different to photograph but make sure someone knows you have wandered off you don't want to get eaten by a bear.

Keep an open mind when things don't work out i.e. the sunrise is clouded out, is too misty or a fog has rolled in. Look for something else to photograph make the most of the situation.

Date both your cards and batteries so you know when you purchased them. If travelling overseas or a long way from home, make sure you have extras of everything.

Use exposure compensation to help with your foregrounds as these can also a focal point in your image. Bracketing is also a great idea.

Fill your frame. Scapes don't always have to be a big wide image. Look for something interesting in the view and focus in on that.

To add more interest to your image try framing your image by using trees or branches to create a frame for you to look through, inviting you into your image.

Make sure leading lines take you into the picture and not out of it.

Different textures i.e. rocks, pebbles, flowers, grass, water etc. all add an extra layer of interest to your image.

Pano shots overlap by 1/3 this helps when it comes to stitching them together.

Use portrait mode when you want height in your pano.

If you are retouching an image make sure you do the same if you have a reflection in the water.

Focus stacking helps but if your get the image right the first time you don't have to do too much editing.

Long Exposure by Dave Gooding

Dave took us through his journey with long exposure. He mainly photographs long exposure seascapes.

Dave, like Jill, is a planner but he carries minimal gear on him. Dave spends a lot of time in the water and trying to retrieve something that you have dropped in the water can be problematic. So have lots of pockets or carry minimal gear.

Also remember to wash off your tripod and other camera gear as water, especially salt water can be very unforgiving on your equipment.

Different times of the day create different effects. Dave uses NISI filters to create his amazing images.

6 stop and 10 stop filters are the filters that Dave uses the most. Gradient 6 stop filters are good for bright skies and can help with dynamic range.

Problems arise on how to focus as you cannot see through a 10stop filter.

Dave suggests getting your focus and framing your subject before adding your filter to your camera.

Your camera histogram can be very useful as well when using filters you can't see through.

Play around with exposure times. There can be a big difference in the smoothness of water and clouds in a 10sec and 15sec image. Be careful not to blow out your whites with too long an exposure time.

Try and gauge what effect you are going for and work towards that.

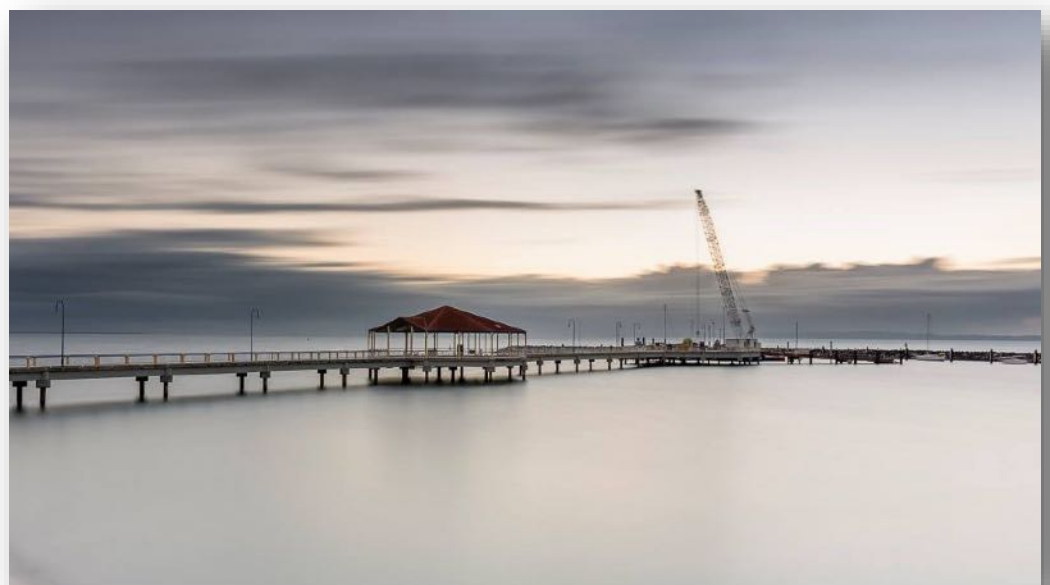
In the digital age you can take as many photographs as you like, it doesn't cost you anything just time deleting what you don't want to keep.

Dave suggested if you want your photos critiqued go to the ePHOTOzine website.

There are galleries there where you can upload your images and get feed back from other photographers.

But always be aware that photography is art, and everyone has a different opinion and follow those who inspire you.

Article submitted
and written by
Maree Rablin





You're invited! educate engage
inspire



Where art meets inspiration ...

2024 PSQ Convention

Join us in Brisbane for this exciting 3 day event 4th, 5th & 6th May



Aspley Camera Club is hosting this event. If you're available to help with any of the background organisation, please contact Pete Law! Email: president@aspleycameraclub.org.au

Check out the Events page by clicking here!



There is a photography page for members of Photography Clubs in Queensland. Tryg Helander often posts very useful information regularly in the group. This group will expand your knowledge and help you on your photographic journey. There is a link on the image above which will take you to the page.

